

U50-5S

For Earth, For Life
Kubota

Kubota Mini Excavator



Operational Performance

The new powerful and efficient hydraulic system is highly productive, ultra-maneuvrable, environmentally friendly and cost-efficient.

● Zero-Tail Swing

Kubota's zero-tail swing always keeps the tail of the mini excavator within track-width when swivelling, enabling operation in tight and confined spaces.



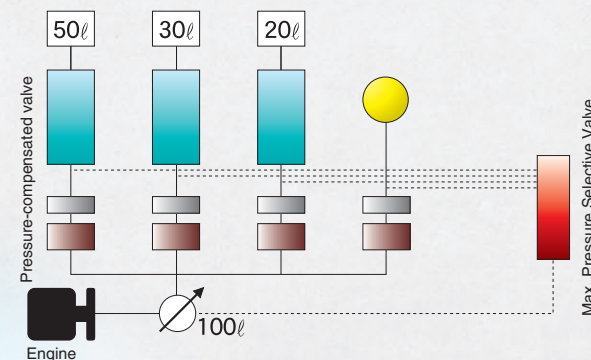
● Boom-Swing

Kubota's boom-swing allows direct digging close to a wall or building without repositioning the mini-excavator.



● The One Pump Load Sensing System

The system adjusts the hydraulic pressure automatically according to the load changes and reacts precisely to the movement of the control lever. Since the engine load is small, various inching and compounding operations can be undertaken while eliminating unnecessary loss of hydraulic flow.



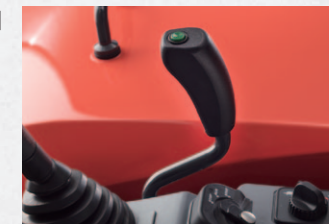
● Four simultaneous operations

Bucket, boom, arm and swing can be operated simultaneously and smoothly.



● 2-speed travel switch

By placing the 2-speed travel switch on the dozer lever, dozing operations can be done faster and easier.



● Third line hydraulic return

When working with one-way hydraulic attachments, such as a breaker, the standard third-line hydraulic return system allows oil to flow directly back to the tank without running through the control valves. This contributes to less oil contamination, reduced back pressure, and greater oil flow efficiency.



● Straight Travel

The excavator travels straight even with front attachment operating.

● Backup Power Supply

12V electric power socket provides backup power.

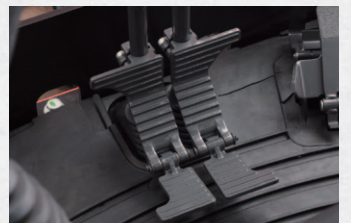
● Four-pattern selection system

Four pattern operation system allows you to easily select the pattern required by the operator.



● Travel pedals

The standard travel pedals facilitates ease of tracking.



● Service ports

Convenient service port at end of arm allows for hydraulic power for attachments such as a breaker.



● Jacking Capability

Even when idling, the excavator can be jacked up with the bucket or blade.

● H-shaped Track Roller

H-shaped roller increases lateral stability and enhances operator comfort during travel.

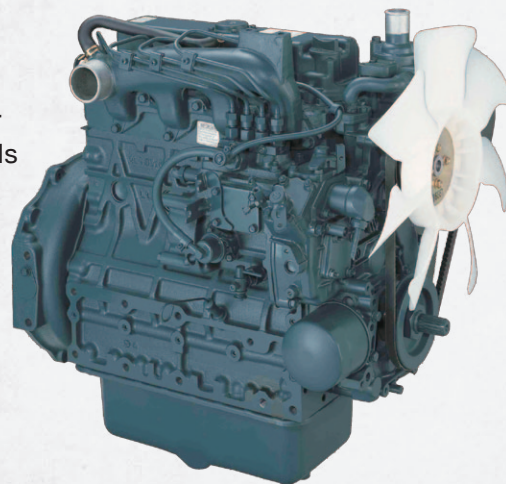
Technology

Advanced functions pooling the essence of Kubota technology.

● Clean-running Kubota Engine

Powerful and dependable, U50-5S's diesel engine delivers superior horsepower and performance. It offers low noise and vibration levels with exceptional fuel efficiency.

Rated output (canopy): 38.6 HP

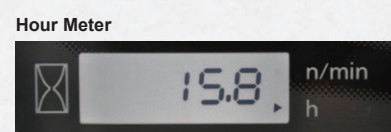
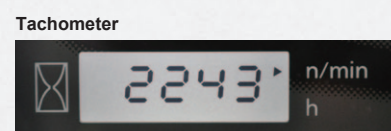
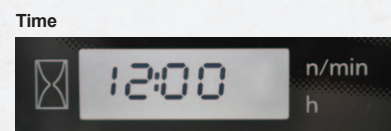


● Digital panel

The user-friendly digital panel features one-touch button operation to view the time, hour meter and tachometer. Warning lamps with code numbers on the display will alert you in case of emergencies such as overheating, hydraulic problems or low battery. With easier access, simpler settings, easy-to-read indicators and alerts, you'll always be aware of the excavator's functioning status.

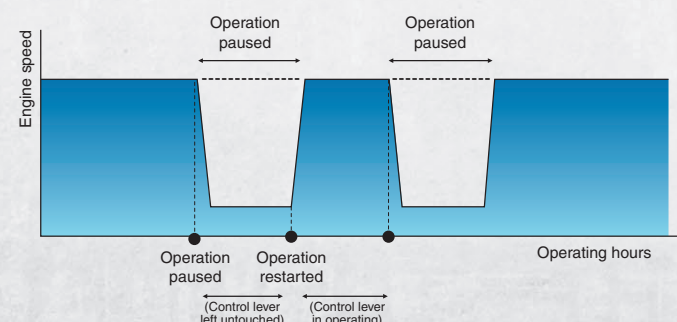
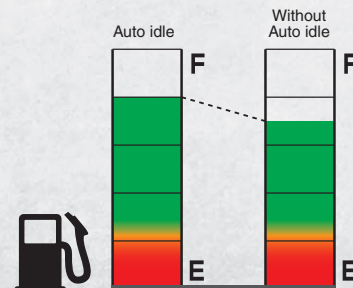


- 1 Fuel Level Gauge
- 2 Water Temperature Gauge
- 3 Warning Lamps (Overheating, Hydraulic, Battery)
- 4 LCD Display (Time, Hour, rpm)



● Auto Idling system

Save fuel with Kubota's Auto Idle. When the control levers are in neutral for more than 4 seconds, the engine RPM automatically idles. Move any control lever and the engine RPM immediately returns. This innovative feature reduces noise and exhaust emissions while reducing operating costs.



Safety & Operator Comfort

Since 1978, when Kubota entered the European and North American markets it was subject to the strictest laws and regulations on safety. Since then we have accumulated all the necessary knowledge and expertise which is now applied to all our latest models providing a reliable, safe and comfortable working environment for operators.

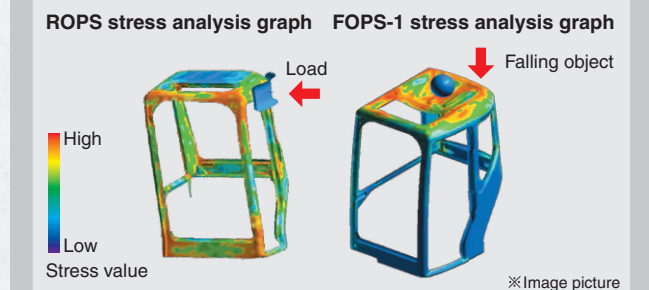
● ROPS/FOPS canopy

The world-class ROPS/FOPS canopy (supplied with seat belts) is used for enhanced operator safety.

Field Test

Stress analysis on ROPS (Roll Over Protective Structure) and FOPS (Falling Object Protective Structure) reveal that the following requirements are met:

- Required energy absorption capability
- Required load carrying capability
- Ensures operator safe zone



● Swivel Motor With Disk Break

When the engine shuts off, the swivel will be locked automatically.

● Prevention of Boom Lowering

Kubota's unique anti-drop valve will prevent natural lowering of boom.

● Engine Start Safety System

The engine can be started up only when the safety lever is set at locking position. If safety lever is set at locking position, the machine will not move preventing accidents caused by mis-operation.

● Wide and Comfortable Space

The cabin is spacious and offers excellent visibility minimising operator stress and fatigue.



Easy Maintenance

Kubota has simplified the procedure for routine service and inspection for easy and improved machine maintenance.



● Right Side Bonnet

Hydraulic system inspection points are consolidated on the right side for easy access.

● Rear Side Bonnet

Engine parts consolidated at rear-end for easy access.

● Anti-collision Hood

Hood is located 30 mm inside the rotating part to prevent damage through accidental collision.



● Boom Cylinder Protector

The new, steel-plated V-shaped boom cylinder protector prevents damage when loading.



● Two-piece hose design

Kubota's innovative two-piece hose design for the dozer blade drastically reduces hose replacement time. This design virtually eliminates the need to enter the machine for maintenance.



● Water-proof Electrical System

Electrical system completely water-proof.

● Fuel Tank Drain Valve

Fuel tank drainage is simple and convenient.



● Double Air-filter

Double air-filter structure ensures cleaner intake system.

● Built-in Hoses for Attachment

This prevents hose damage during operation.

● "X"-shaped Frame + Slanted Track Frame

Both components are designed to reduce soil accumulation on track frame.

● Pilot System with Pipeline Filter

Pilot filter element provided to prevent failures caused by clogged operational circuits.

Kubota Mini Excavator Active in Singapore

Kubota mini excavator is widely used in various construction fields such as road, municipal works, pipe networks, gardening and water conservancy combining with the use of multiple attachments. You may carry out operations at ease under various special conditions and construction environments. The real world-class Kubota mini excavator is ready to take any challenge.

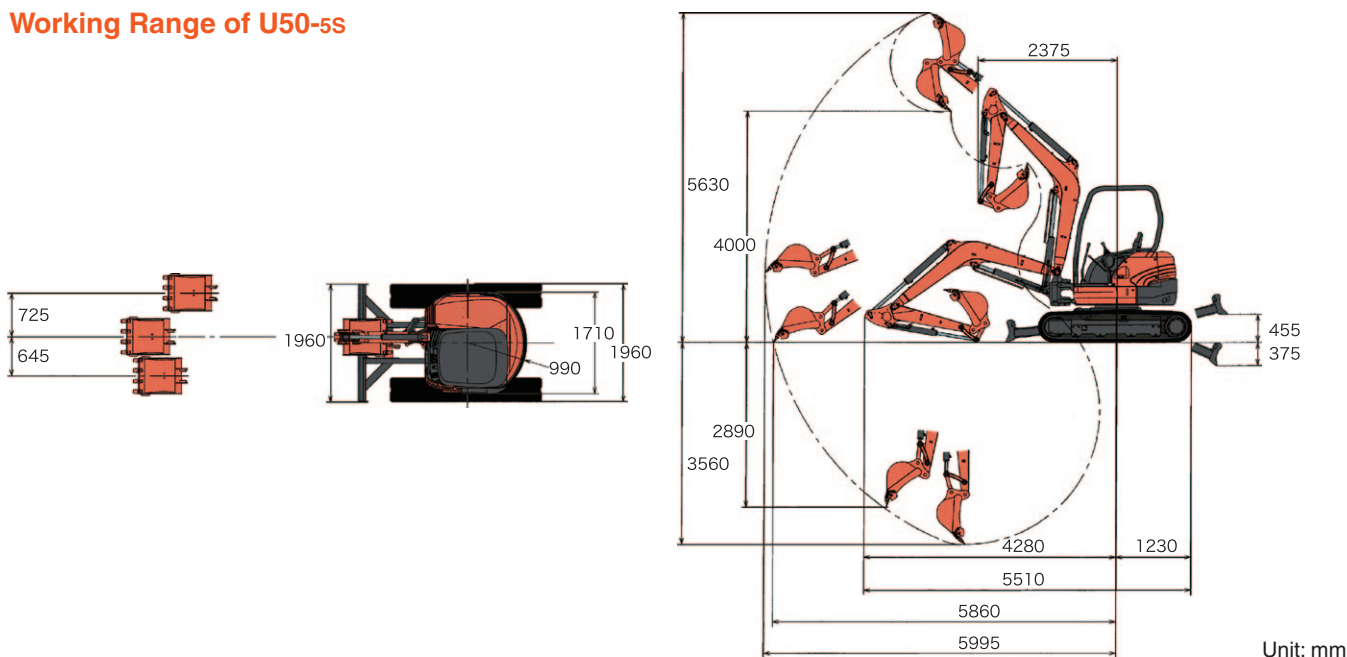


Specifications

Model			U50-5S
Bucket capacity			m ³ 0.16
Std. bucket width: (with/without cutting blade)			mm 650 / 600
Machine weight	Canopy (rubber/steel crawler)	kg	4705 / 4790
	Cabin (rubber/steel crawler)	kg	4780 / 4865
Operating weight (Including operator weight: 75kg)	Canopy (rubber/steel crawler)	kg	4780 / 4865
	Cabin (rubber/steel crawler)	kg	4855 / 4940
Dimensions (In transport condition)	Overall length	mm	5510
	Overall height	mm	2540
	Overall width	mm	1960
	Min. ground clearance	mm	320
Engine	Model	Canopy	Kubota V2203-M-E3-BH-BR2
		Cabin	Kubota V2203-M-E2-BH-BR1
	Total displacement	cc	2197
	Rated output	Canopy kW (HP) / rpm	28.8 (38.6) / 2250
Working range		Cabin kW (HP) / rpm	28.5 (38.2) / 2250
	Max. digging height	mm	5630
	Max. dumping height	mm	4000
	Max. digging depth	mm	3560
	Max. vertical wall digging depth	mm	2890
	Max. digging radius	mm	5995
	Boom swing (left/right)	deg	70 / 50
	Min. turning radius (with swing)	mm	2375 (1875)
	Min. tail turning radius	mm	990
Max. breakout force (bucket)			kN (kgf) 36.5 (3720)
Track type			Rubber / Steel
Track width			mm 400
Travel section	Crawler length	mm	2500
	Tumbler distance	mm	1990
	Travel speed (1st/2nd gear)	km / h	2.5/4.4
	Max. climbing angle	deg	30
Swing speed			rpm 8.6
Blade	Width	mm	1960
	Height	mm	360
	Max. lift above ground/drop below ground	mm	455 / 375
Hydraulic pump type			Variable pump × 1 + gear pump × 1
Swivel motor type			Hydraulic piston motor
Travel motor type			Hydraulic piston motor: 2F
Fuel tank capacity			L 64

● Specifications in this catalog are subject to change without prior notice.

Working Range of U50-5s



陸機械私人有限公司
LAND EQUIPMENT PTE LTD

32 JOO KOON ROAD SINGAPORE 628985
TEL: (65) 6862-5223 FAX: (65) 6861-5223
E-Mail: sales@land-equipment.com.sg
Website: <http://www.land-equipment.com.sg>

AKK1735