



SCRAP SHEAR
SH EAGLE II

SCRAP SHEAR SH EAGLE II

***With 50 years in manufacturing attachments,
MANTOVANIBENNE has invested in the highest technology
to develop world leading scrap shears.***

Mantovanibenne's commitment to continuous development of its products culminates to date with all new EAGLE II range of hydraulic, fully rotating scrap shears.

Dedicated shears for many different work applications, including demolition of steel structures, processing steel in scrap applications and many others.

The all new EAGLE II range offers more productivity through increased power, a new jaw design, and all new blade types.

All Eagle II blades can be changed quickly and easily, minimising machinery downtime, optimising productivity.

The EAGLE II range are all fitted with power speed valves to maximise cycle times and provide maximum effort when needed.

The EAGLE II range is manufactured from the highest grade steels, ensuring the maximum tool strength, with the best possible wear resistance.



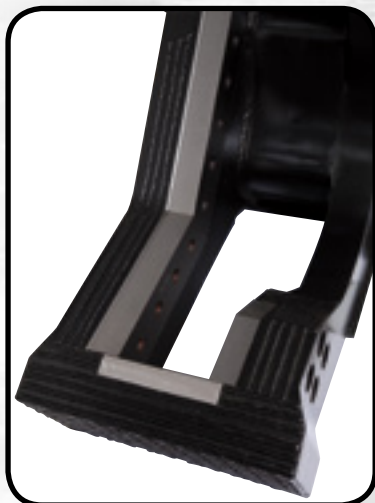
SCRAP SHEAR SH EAGLE II



New Piercing Tip
Bolted blades on piercing tip for fast replacement. Eliminates time consuming rebuilding of the tip.



Double Guide
Twin guide for the movable jaw, ensures perfect alignment.



Frontal Blade
The front blade ensures accurate shearing with the tip, and can be turned.



New Jaw design
New fixed jaw design increases cutting capacity, material is eased to fall away easily.



New Manto-Autolube System®
Heavy shears above 7t are equipped with the "Manto-Autolube", a unique total shear greasing system, ensuring all moving parts are regularly greased.



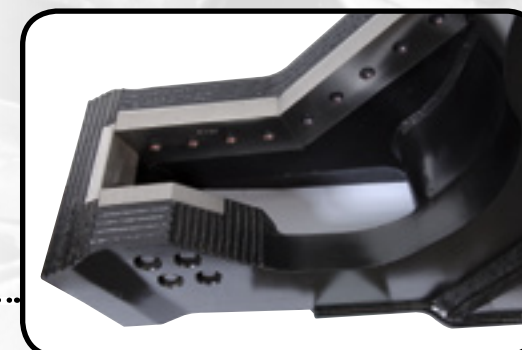
All New Cylinders
Increased cylinder size for 20% more power. Forged cylinder rod for a better functionality and security. Reversed cylinder installation for full rod protection.



Rotating Group with Anticavitation Valve
360° continuous rotation. Always the best positioning of the shear.



Special Speed Valve
Reduced cycle times. Regenerating power when required. Protection for the shear eliminating pressure peaks.



All New Blades
All the blades have been redesigned in a rhomboid shape to reduce stress on the jaws. Each blade can be turned effectively 3 times. The new blades are threaded for easier removal and installation.



Central Pin Adjustment Kit
Mantovanibenne have a unique central pivot pin layout. This allows for regular adjustment of the pin to ensure perfect shearing. While fully protected the pin can be removed for maintenance of all related parts.

SCRAP SHEAR SH EAGLE II



SH50R

Excavator Weight with
SH bucket place 6-9 t
Excavator Weight with
SH stick place 4-6 t
Tool Weight 650 kg



SH25R eagle

Excavator Weight with
SH bucket place 4-6 t
Excavator Weight with
SH stick place 2-4 t
Tool Weight 380 kg



SH130R

Excavator Weight with
SH bucket place 13-17 t
Excavator Weight with
SH stick place 8-12 t
Tool Weight 1220 kg



SH100R

Excavator Weight with
SH bucket place 10-12 t
Excavator Weight with
SH stick place 7-10 t
Tool Weight 1100 kg



SH310R

Excavator Weight with
SH bucket place 28-39 t
Excavator Weight with
SH stick place 20-28 t
Tool Weight 3300 kg



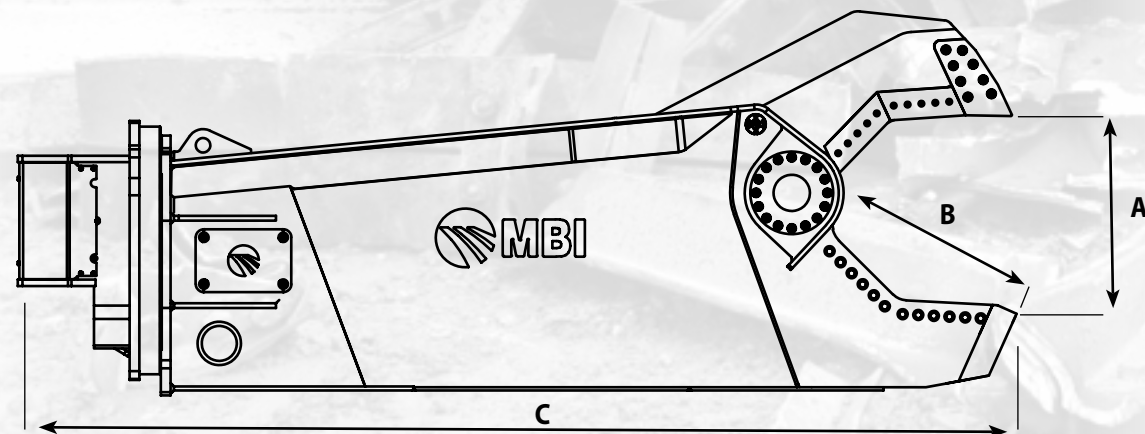
SH180R

Excavator Weight with
SH bucket place 18-27 t
Excavator Weight with
SH stick place 14-18 t
Tool Weight 2100 kg

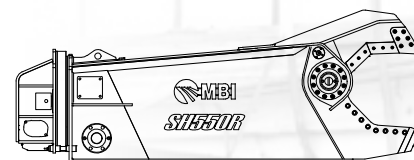


SH410R

Excavator Weight with
SH bucket place 39-50 t
Excavator Weight with
SH stick place 28-39 t
Tool Weight 4700 kg

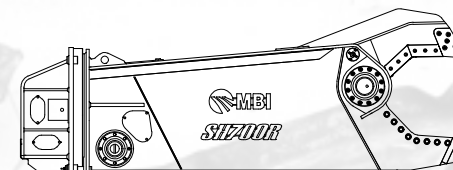


DIMENSIONS																	
MODEL		SH25R	SH50R	SH100R	SH130R	SH180R	SH310R	SH410R	SH550R	SH700R	SH900R	SH1500R	SH2000R	SH700	SH900	SH1500	SH2000
A	mm	195	290	375	375	445	565	670	760	830	940	1075	1200	830	940	1100	1200
B	mm	200	290	395	395	525	630	720	780	840	950	1100	1200	840	950	1100	1200
C	mm	1350	1900	2000	2100	2700	3300	3700	3950	4300	4600	5200	6000	3730	4070	5200	5400



SH550R

Excavator Weight with
SH bucket place 51-65 t
Excavator Weight with
SH stick place 39-45 t
Tool Weight 5750 kg



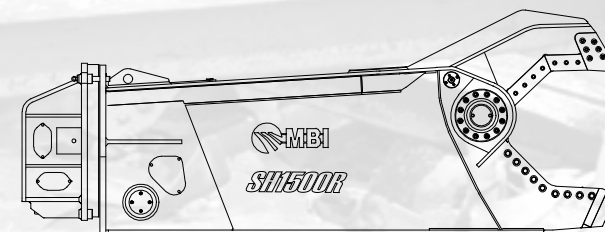
SH700R

Excavator Weight with
SH bucket place 70-90 t
Excavator Weight with
SH stick place 45-60 t
Tool Weight 7700 kg



SH900R

Excavator Weight with
SH bucket place 91-110 t
Excavator Weight with
SH stick place 60-80 t
Tool Weight 10100 kg



SH1500R

Excavator Weight with
SH bucket place 110-170 t
Excavator Weight with
SH stick place 80-110 t
Tool Weight 15000 kg



SH2000R

Excavator Weight with
SH bucket place 170-200 t
Excavator Weight with
SH stick place 110-150 t
Tool Weight 21000 kg

TECHNICAL SPECIFICATIONS																	
		HYDRAULIC ROTATION 360°												WITHOUT ROTATION			
MODEL		SH25R	SH50R	SH100R	SH130R	SH180R	SH310R	SH410R	SH550R	SH700R	SH900R	SH1500R	SH2000R	SH700	SH900	SH1500	SH2000
Excavator Weight with SH bucket place	t	4-6	6-9	10-12	13-17	18-27	28-39	39-50	51-65	70-90	91-110	110-170	170-200	60	80	Pls contact Technical Dept.	Pls contact Technical Dept.
Excavator weight with SH stick place	t	2-4	4-6	7-10	8-12	14-18	20-28	28-39	39-45	45-60	60-80	80-110	110-150	31	40	Pls contact Technical Dept.	Pls contact Technical Dept.
Tool weight*	kg	380	650	1100	1220	2100	3300	4700	5750	7700	10100	15000	21000	6750	9100	12500	19500
Hydraulic working pressure	bar	200-250	250-300	250-300	250-300	320-350	320-350	320-350	320-350	320-350	320-350	320-350	320-350	320-350	320-350	320-350	320-350
Oil flow	l/min	60-100	90-120	90-110	90-110	150-200	200-250	250-300	275-375	500-600	600-700	800-1000	700-1000	500-600	600-700	800-1000	700-1000
Max hydraulic motor oil pressure	bar	190-200	90-100	190-200	90-100	90-100	100-115	100-115	100-115	140-150	170-190	170-190	170-200	-	-	-	-
Max motor oil flow	l/min	10-15	15-20	10-15	30-40	30-40	30-40	30-40	30-40	50-60	55-65	130-150	140-150	-	-	-	-
Speedvalve		○	○	●	●	●	●	●	●	●	●	●	●	●	●	●	●
Interchangeable spare parts		●	●	●	●	●	●	●	●	●	●	●	●	●	●	●	●
Automatic greasing system		○	○	○	○	○	○	○	○	●	●	●	●	●	●	●	●

*Tool weight does include Mantovanibenne top bracket.
We are constantly improving our products and therefore we reserve the right to change the design and technical specifications without prior notice.
○ not available ● available
BT SH mini 05 - SH 08 - SH SR 04 - SH2000 01



SH900 Eagle II



SH900 Eagle II



SH410 Eagle II



SH410 Eagle II



SH310 Eagle II



SH310 Eagle II



SH310 Eagle II



SH700 Eagle II



SH700 Eagle II



SH700 Eagle II



SH180 Eagle II



Notes



Mantovanibenne®

***THE NEW SCRAP SHEAR
SH EAGLE II***





www.mantovanibenne.com - sales@mantovanibenne.com

follow us on



Mantovanibenne s.r.l. - Mirandola (Mo) Italy - Tel. +39 0535 615811 - Fax +39 0535 615830